



# NATIONAL PARK SEMINARY Apartments

9615 Dewitt Dr., Silver Spring, MD 20910

## UNIT 107

1 Bedroom

1 Bath

876 SF

application fee

holding deposit

security deposit

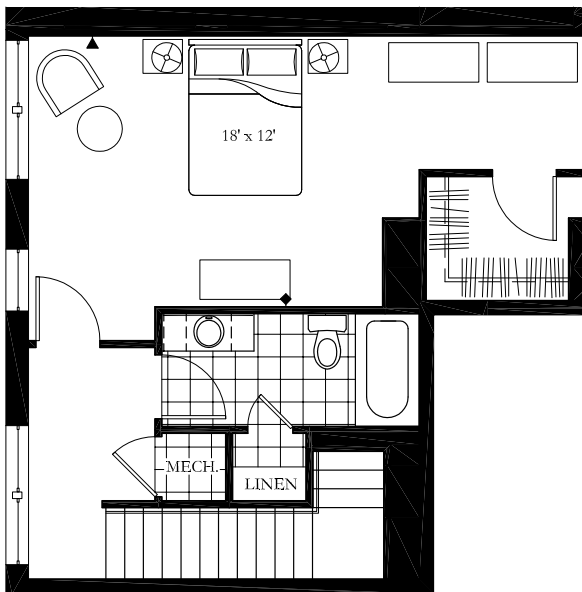
pet deposit

monthly rent

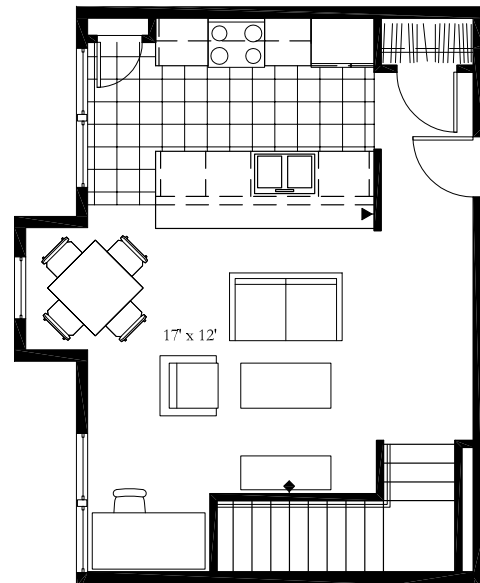
monthly pet rent

parking

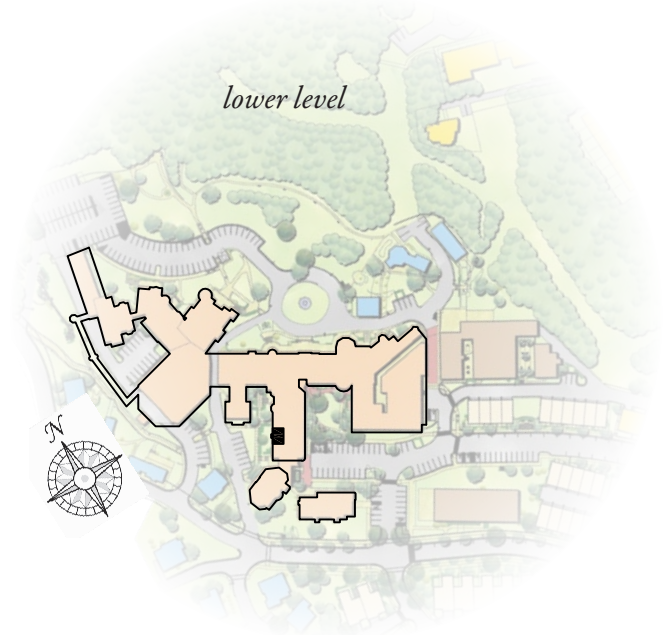
electric utilities



upper level



lower level



[nationalparkseminaryapts.com](http://nationalparkseminaryapts.com) | 301.650.5766 | 9615 Dewitt Dr., Silver Spring, MD 20910

Please note that income and student restrictions may apply. All plans and specifications are subject to revisions deemed advisable by builder or architect, or required by law.