



**NATIONAL PARK  
SEMINARY**  
*Apartments*

9615 Dewitt Dr., Silver Spring, MD 20910

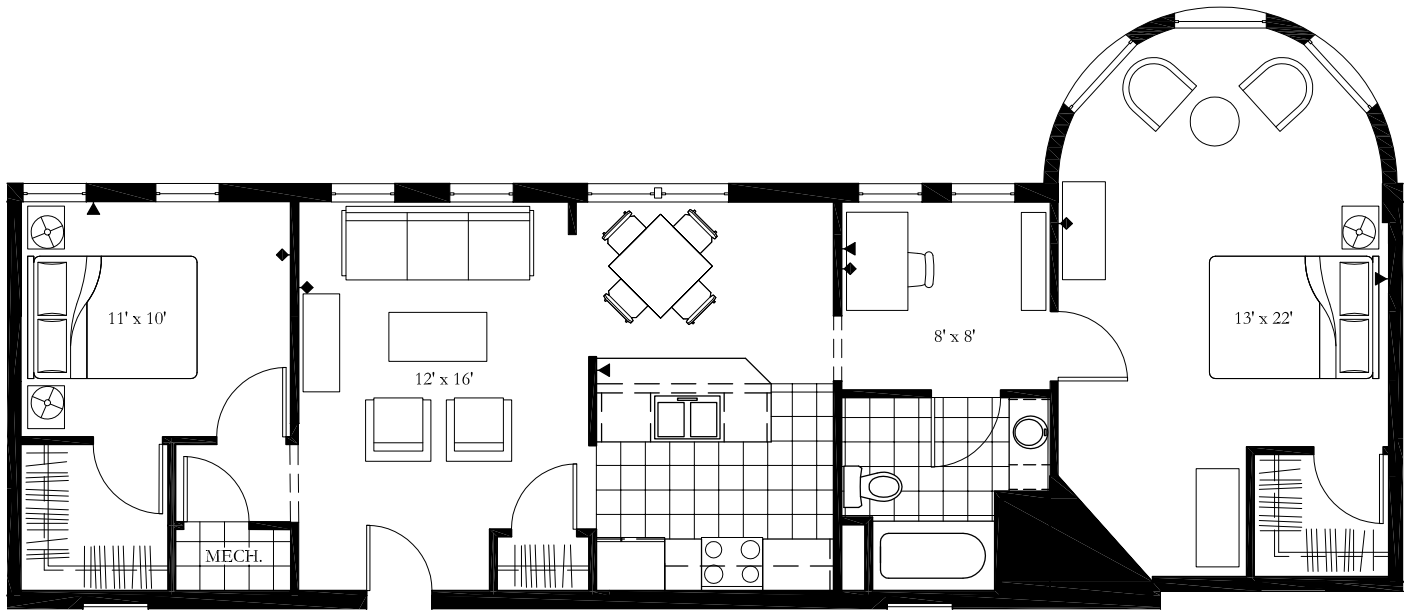
**UNIT 202**

2 Bedroom

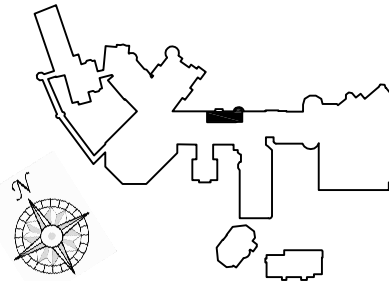
1 Bath

1 Study

961 SF



- ▶ telephone/DSL
- ◆ cable
- full height wall
- ▬ partial height wall
- ▭ carpet
- ▧ vinyl



view additional floor plans at [www.nationalparkseminaryapts.com](http://www.nationalparkseminaryapts.com) | call 301.650.5766 for details

*Please note that income and student restrictions may apply. All plans and specifications are subject to revisions deemed advisable by builder or architect, or required by law.*

Professionally managed by: **Alexander|RE**  
Real Estate Services