



**NATIONAL PARK
SEMINARY**
Apartments

9615 Dewitt Dr., Silver Spring, MD 20910

UNIT 200
2 Bedroom
1 Bath
828 SF

application fee

holding deposit

security deposit

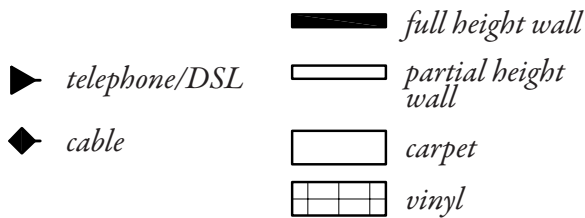
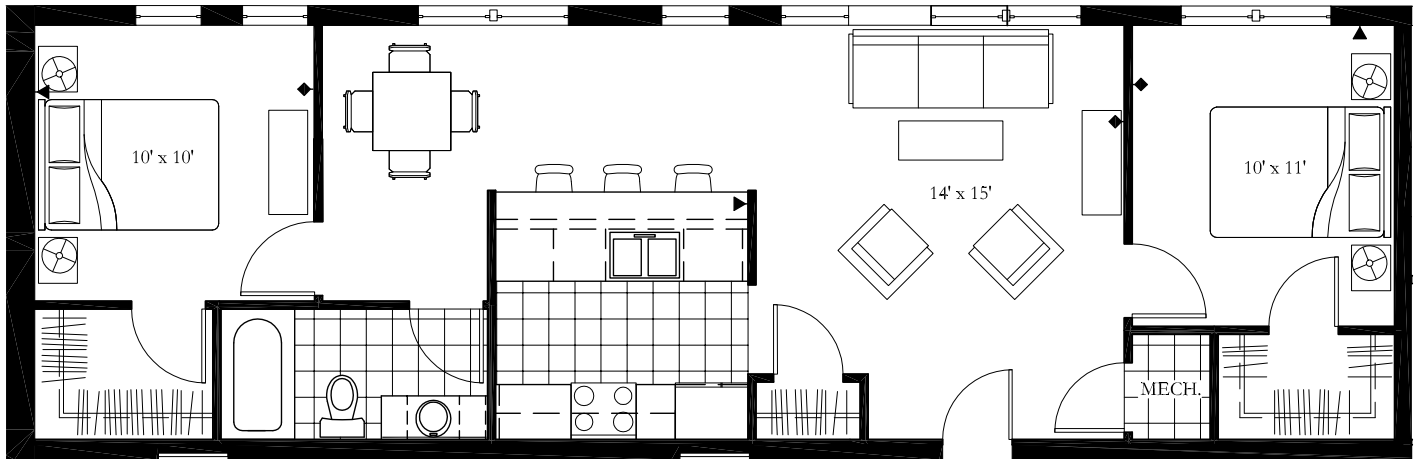
pet deposit

monthly rent

monthly pet rent

parking

electric utilities



nationalparkseminaryapts.com | 301.650.5766 | 9615 Dewitt Dr., Silver Spring, MD 20910

Please note that income and student restrictions may apply. All plans and specifications are subject to revisions deemed advisable by builder or architect, or required by law.