



# NATIONAL PARK SEMINARY

## Apartments

9615 Dewitt Dr., Silver Spring, MD 20910

### UNIT 211

1 Bedroom  
1 Bath  
1 Study  
803 SF

application fee

holding deposit

security deposit

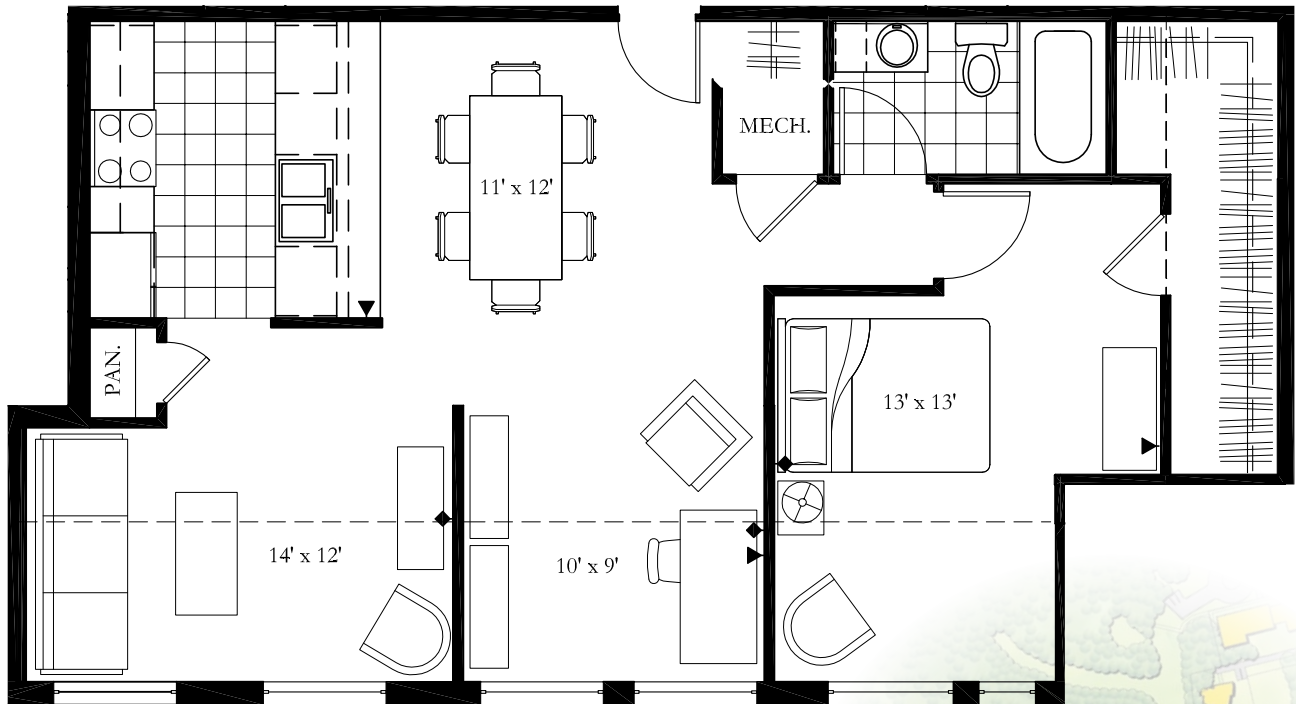
pet deposit

monthly rent

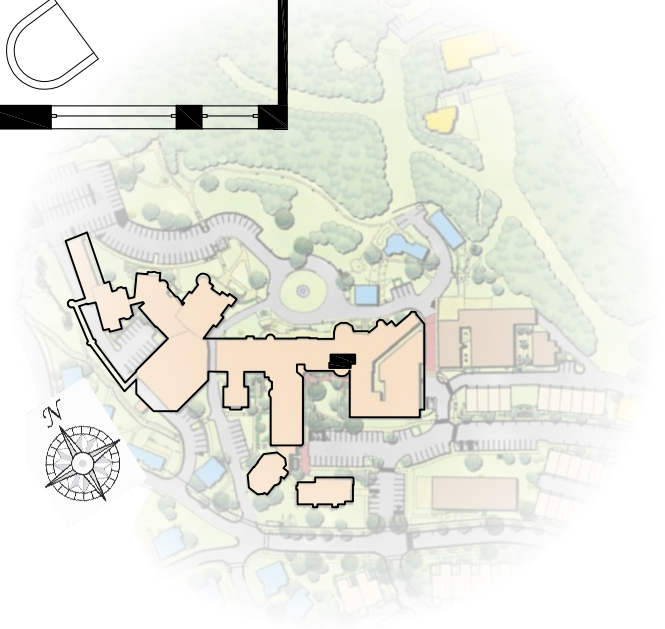
monthly pet rent

parking

electric utilities



- full height wall
- partial height wall
- telephone/DSL
- cable
- carpet
- vinyl



[nationalparkseminaryapts.com](http://nationalparkseminaryapts.com) | 301.650.5766 | 9615 Dewitt Dr., Silver Spring, MD 20910

*Please note that income and student restrictions may apply. All plans and specifications are subject to revisions deemed advisable by builder or architect, or required by law.*