



**NATIONAL PARK SEMINARY**  
*Apartments*

9615 Dewitt Dr., Silver Spring, MD 20910

**UNIT 217**  
1 Bedroom  
1 Bath  
696 SF

*application fee*

*holding deposit*

*security deposit*

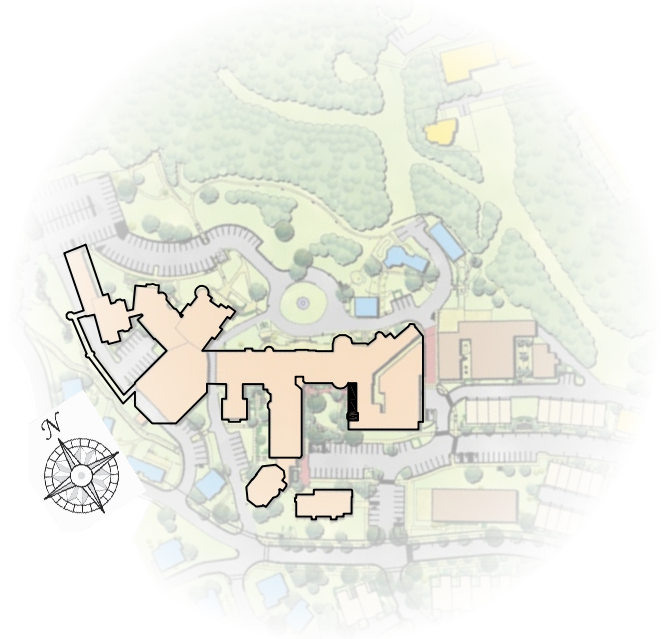
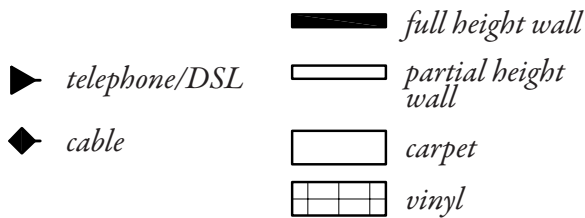
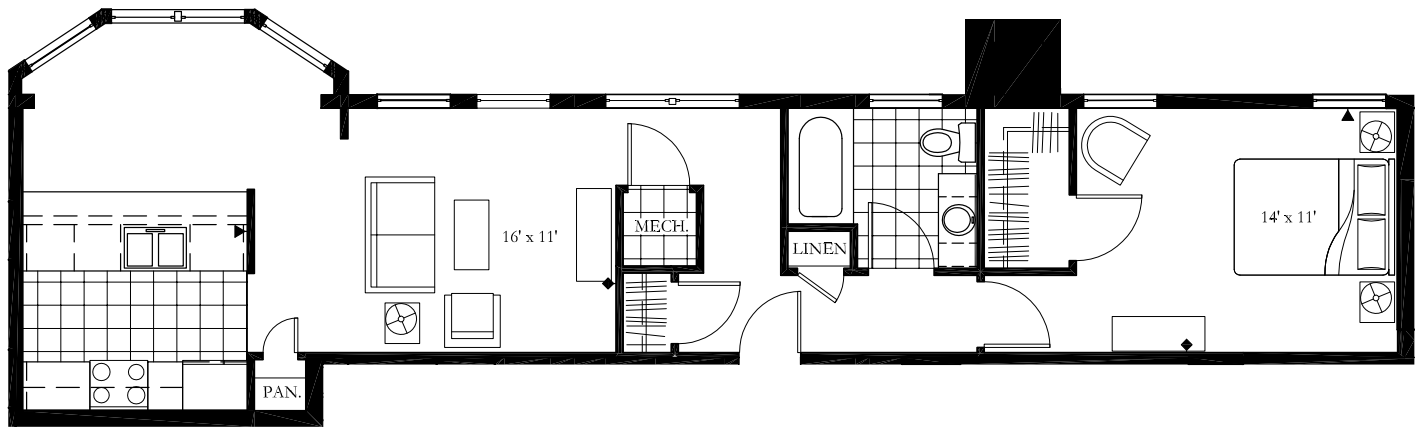
*pet deposit*

*monthly rent*

*monthly pet rent*

*parking*

*electric utilities*



[nationalparkseminaryapts.com](http://nationalparkseminaryapts.com) | 301.650.5766 | 9615 Dewitt Dr., Silver Spring, MD 20910

*Please note that income and student restrictions may apply. All plans and specifications are subject to revisions deemed advisable by builder or architect, or required by law.*