



NATIONAL PARK SEMINARY
Apartments

9615 Dewitt Dr., Silver Spring, MD 20910

UNIT 314
1 Bedroom
1 Bath
1 Study
656 SF

application fee

holding deposit

security deposit

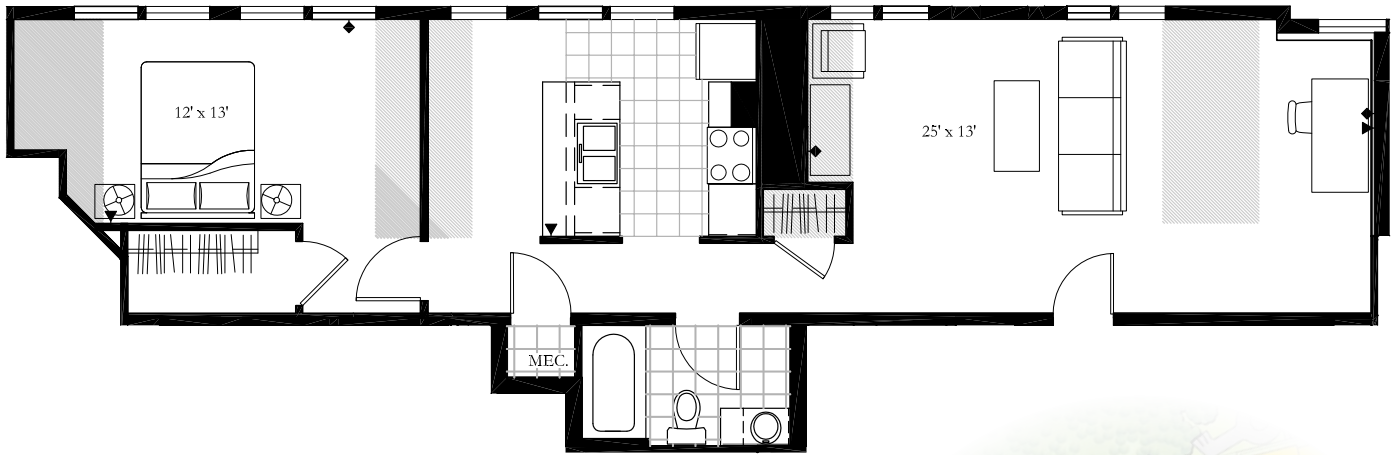
pet deposit

monthly rent

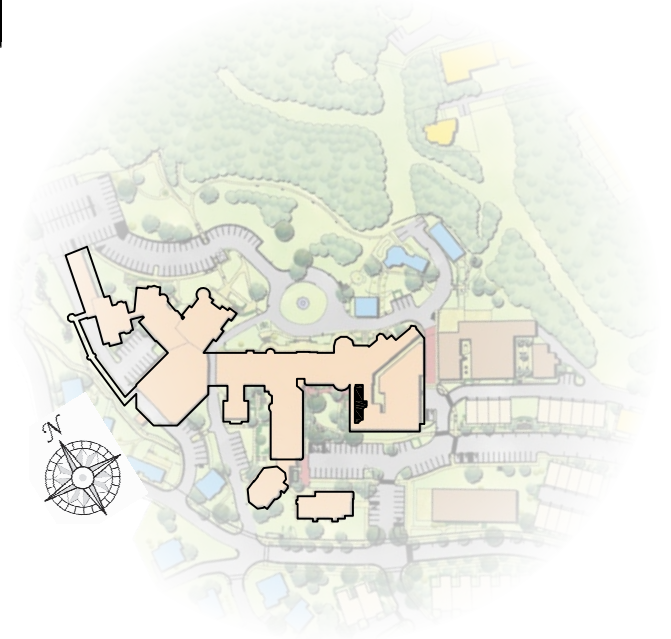
monthly pet rent

parking

electric utilities



- ▶ *telephone/DSL*
- ◆ *cable*
- ▬ *full height wall*
- ▬ *partial height wall*
- *carpet*
- ▤ *vinyl*



nationalparkseminaryapts.com | 301.650.5766 | 9615 Dewitt Dr., Silver Spring, MD 20910

Please note that income and student restrictions may apply. All plans and specifications are subject to revisions deemed advisable by builder or architect, or required by law.