



**NATIONAL PARK  
SEMINARY**  
*Apartments*

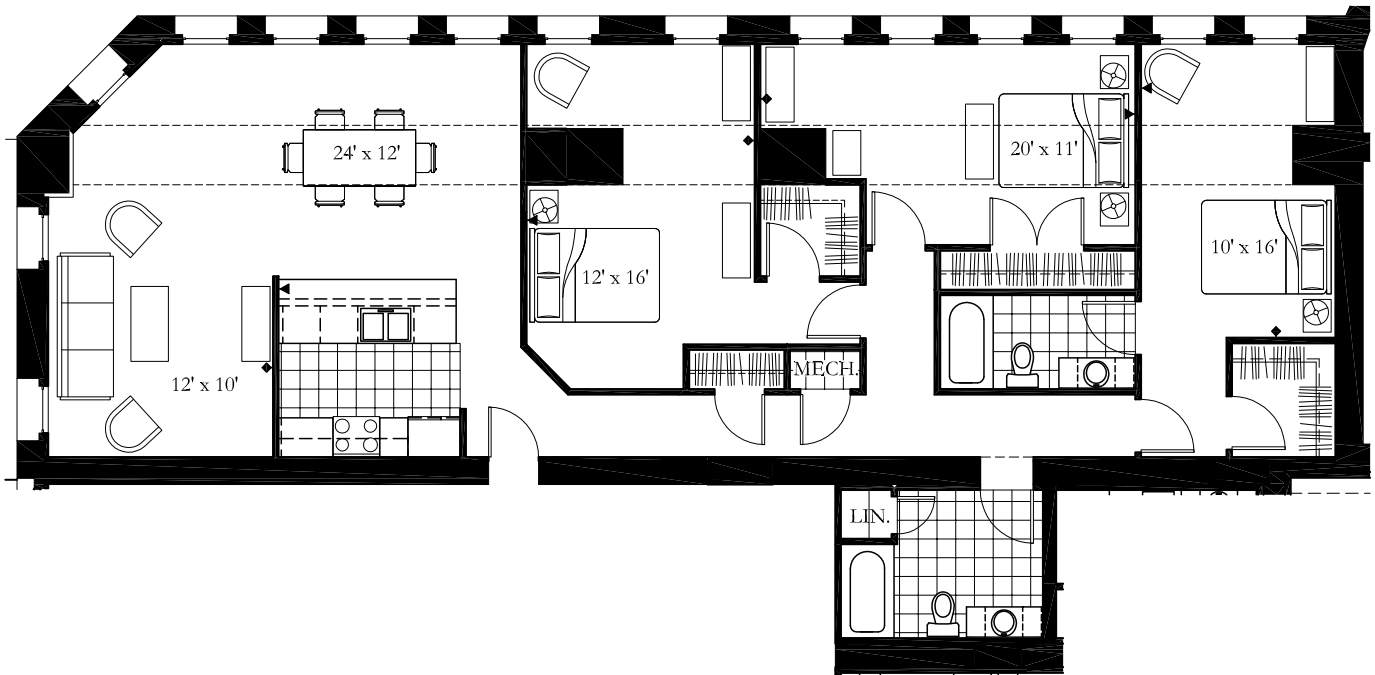
9615 Dewitt Dr., Silver Spring, MD 20910

**UNIT MB04**

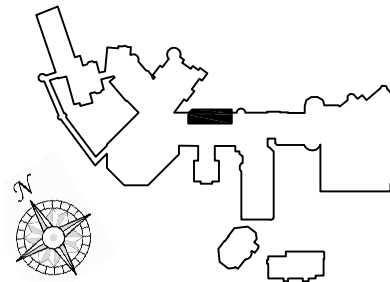
3 Bedroom

2 Bath

1,491 SF



- ▶ telephone/DSL
- ◆ cable
- ▬ full height wall
- ▬ partial height wall
- carpet
- ▤ vinyl



view additional floor plans at [www.nationalparkseminaryapts.com](http://www.nationalparkseminaryapts.com) | call 301.650.5766 for details

*Please note that income and student restrictions may apply. All plans and specifications are subject to revisions deemed advisable by builder or architect, or required by law.*

Professionally managed by: **Alexander|RE**  
Real Estate Services